

E4922 Compact adjustable twin wall spotlight – Copper - 240v GU10

The E4922 is a 240-volt compact wall light made from solid natural copper which naturally weathers over time. A regular application of a suitable metal polish will maintain the factory finish if required. It has a flush lens to prevent water accumulation, and a longer body to shield the lamp from view. It can accommodate a wide range of GU10 led or halogen lamps.



PHYSICAL DATA

The E4922 is an IP65 rated compact spotlight measuring 103mm x 63mm, mounted on a 77mm diameter x 53mm high base. The light can be rotated through 180° and angled 90°. There is sufficient distance internally between lamp holder and lens (72mm) to permit the fitting of optional glare louvre (E4010), frosted lens (MR16AFL) and a range of Dichroic clip on colour filters.

ELECTRICAL DATA

- 240v

COMPATIBLE LAMPS (purchase separately)

GU10COB30D 6w 550 lumen 30° warm white
GU10COB185L 3w 60°2700k warm white
GU10COB60D 6w 550 lumens 60° warm white
GU10LED3.6WW 3.6w LED warm white

GU10LEDCWWN 3w LED wide beam warm white
GU10LED3WW 3w warm white
GU10LED5W 5w LED cool white 390 lumens
GU10LED5WWN 5w LED 36° warm white
Halogen lamps up to 35w

INSTALLATION

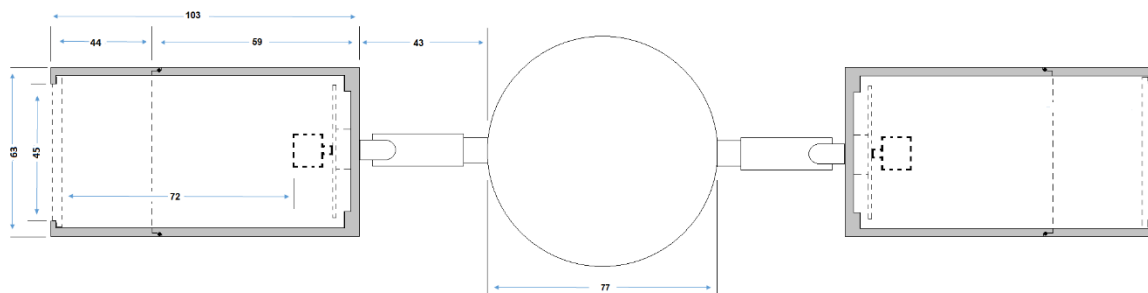
Must be installed by a qualified electrician. Unscrew bezel and insert lamp. Apply small amount of grease to thread and screw bezel back on to the body of the light. Use supplied fixings to attach base plate to the wall in desired location having fed the cable through the grommet on the rear of the mounting base. The use of T9990 sealant is recommended for effective seal around the cable entry. Cable connection is made via three-pole terminal block inside the base. Secure light to the base by tightening up the three grub screws. **Using a single RCD for large numbers of 240v fittings is not recommended due to the risk of nuisance tripping. We advise the use of separate RCD protection for each circuit and a maximum of 12 fittings per RCD**

COMPLIANCE & WARRANTY

- 2 year warranty
- CE / RoHS Compliant

COMPATIBLE ACCESSORIES

| | | |
|----------|----------------------|--|
| E4010 | Glare Louvre | 58mm Honeycomb provides glare protection |
| MR16AFL | Clip on frosted lens | To give a diffused light |
| MR16ASL | Clip on spread lens | To give a rectangular shape to the beam |
| MR16ABDF | Clip on filter | A vibrant blue filter can be used to add drama to water features and modern garden materials such as glass and stainless steel |
| MR16ACDF | Clip on filter | Champagne dichroic filter provides a mellow alternative to white light |
| MR16AGDF | Clip on filter | Green filter that can be used to enhance dull foliage |
| MR16AMDF | Clip on filter | Pale blue filter to give a moonlight effect |
| MR16APDF | Clip on filter | A purple filter that adds vibrant colour to dark subjects |
| MR16ARDF | Clip on filter | This Red filter adds a warm glow to enhance yellow and red foliage |
| MR16ASDF | Clip on filter | Skin tone filter gives statues a warmer skin like appearance |



Exterior Lights UK Ltd
 Web: www.exteriorlightsuk.co.uk
 Email: sales@exteriorlightsuk.co.uk

Product design & specification subject to change or modification without notice. Image for illustration only. E&OE
 Ver1.0 22/08/2016